

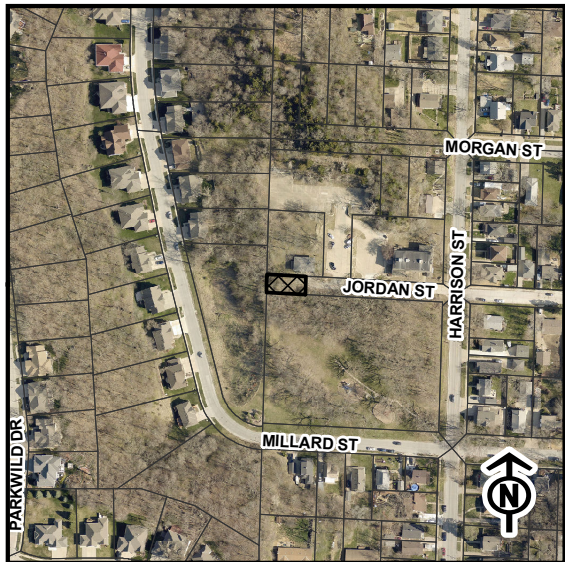


# CITY OF COUNCIL BLUFFS - CITY PLANNING COMMISSION CASE #SAV-21-002 FRONT YARD SETBACK ILLUSTRATION

## Legend

-  Subject Right-of-Way
-  Required Front Yard Setback

0 15 30  
1 Inch = 30 Feet



Last Amended: 7/1/2021



Council Bluffs Community  
Development Department  
209 Pearl Street  
Council Bluffs, IA 51503  
Telephone: (712) 890-5350

### DISCLAIMER

This map is prepared and compiled from City documents, plans and other public records data. Users of this map are hereby notified that the City expressly denies any and all responsibilities for errors, if any, in the information contained on this map, the misuse of the same by the user or anyone else. The user should verify the accuracy of information/data contained on this map before using it. The City assumes no legal responsibility for the information contained on this map.

