

Dodge Riverside Golf Club

Irrigation Improvement Project

Council Bluffs, IA

Project Information:

Project Information:
Dodge River Side Golf Club
18 Hole Championship Golf Course
2 Harrahs Blvd.
Council Bluffs, Iowa 51501
Located just off Interstate 29, exit 53A,
and directly across the street from
Harrah's Casino Hotel
Phase II Site Area = Holes 13 and 14
Phase II Disturbed Area = 4.0 Acres +/-

Client:

City of Council Bluffs
Parks & Recreation Office
209 Pearl St, Council Bluffs, IA 51503
Golf Course General Manager:
Kyle Matson
Golf Course Superintendent:
Craig Mantz
Phone: (712) 328-4660

Utility Provider List:

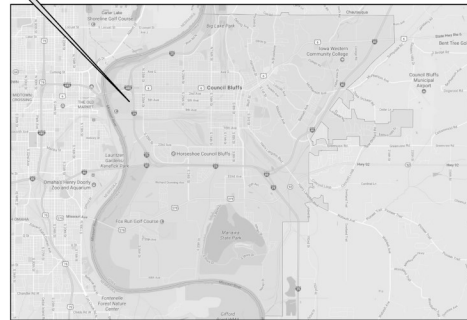
MidAmerican Energy Company
P.O. Box 657
Des Moines, IA 50306-0657

Council Bluffs Water Works
2000 N 25th St, Council Bluffs, IA 51501
(712) 328-1006

Council Bluffs Government:

Mayor Matt Walsh
City of Council Bluffs
209 Pearl St.
Suite 104
Council Bluffs, IA 51503
Phone: (712) 328-4601

Project Vicinity



Council Bluffs - City Map

SCALE: 1"=1 MILE

Sheet #

Sheet Title

G-1

Cover Sheet / Index of Sheets

IR1

Overall Irrigation Plan

IR2

Enlarged Irrigation Plan & Rotor Detail

IR3

Enlarged Irrigation Plan

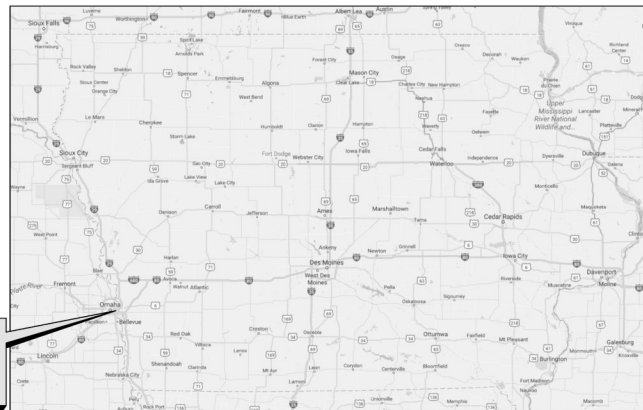
IR4

Enlarged Irrigation Plan

IR5

Enlarged Irrigation Plan

Site Location
Dodge River Side Golf Club
18 Hole Championship Golf Course
2 Harrahs Blvd.
Council Bluffs, Iowa 51501
Located just off Interstate 29, exit
53A, and directly across the street
from Harrah's Casino Hotel



Project Site Location Map

SCALE: 1"=30 MILES

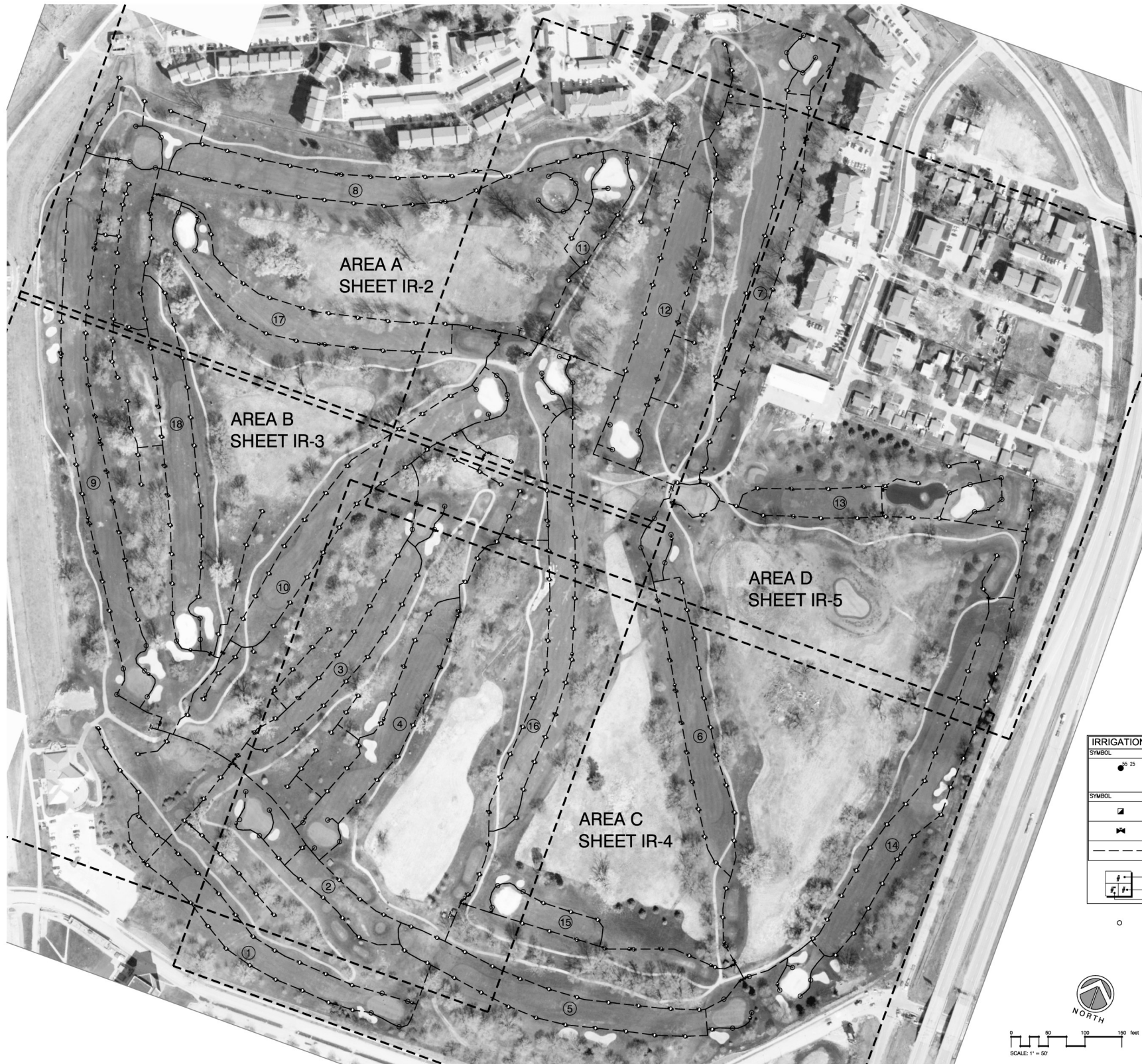


Wyss
Associates, Inc.

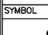
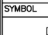


Golf Course Architecture
Landscape Architecture
Parks & Recreation Design

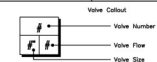
728 Sixth Street Rapid City, South Dakota 57701-3670
Ph.605.348.2268 email:admin@wyssassociates.com

Construction Documents

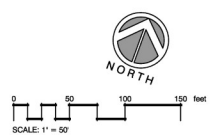


- GENERAL NOTES:
1. THIS PROJECT CONSISTS OF REPLACING ALL OF THE V.I.H. ROTORS AND SWING JOINTS ON THE GOLF COURSE WITH EXCEPT TO THE ROTORS AT THE GREEN COMPLEXES. SEE IRRIGATION LEGEND FOR FURTHER COORDINATION. (464 TOTAL REPLACEMENTS)
 2. ALL EXISTING MAINLINE, IRRIGATION PIPING AND CONTROL WIRING ARE TO REMAIN IN PLACE AS IS.

IRRIGATION SCHEDULE			
SYMBOL	MANUFACTURER/MODEL/DESCRIPTION	QTY	PSI
	Toro INFINITY 55-568-1 (VERIFY WITH OWNER) Remove and Replace existing Hunter Golf V.H. Rotor and Swing Arms with NEW Toro INFINITY 55-568-1 V.H. ROTOR and new swing arm assembly.	464	80
	EXISTING QUICK COUPLER		
	EXISTING ISOLATION VALVE		
	Irrigation Mainline: PVC Schedule 40		



ALL EXISTING ROTORS AT GREEN SURROUNDS ARE TO REMAIN AS IS (NO WORK)





**Know what's below.
Call before you dig.**

The locations of all existing utilities are shown in an approximate location. The Contractor is responsible for coordination and location of all existing utilities. Contractor is to be responsible for any and all damage resulting from the Contractor's failure to locate and protect any and all existing utilities.



Wyss Associates, Inc.
Golf Course Architecture
Parks & Recreation Design



8/24/2020

Project Name
**Dodge Riverside Golf Course
Irrigation Improvement
Project**
Council Bluffs, IA

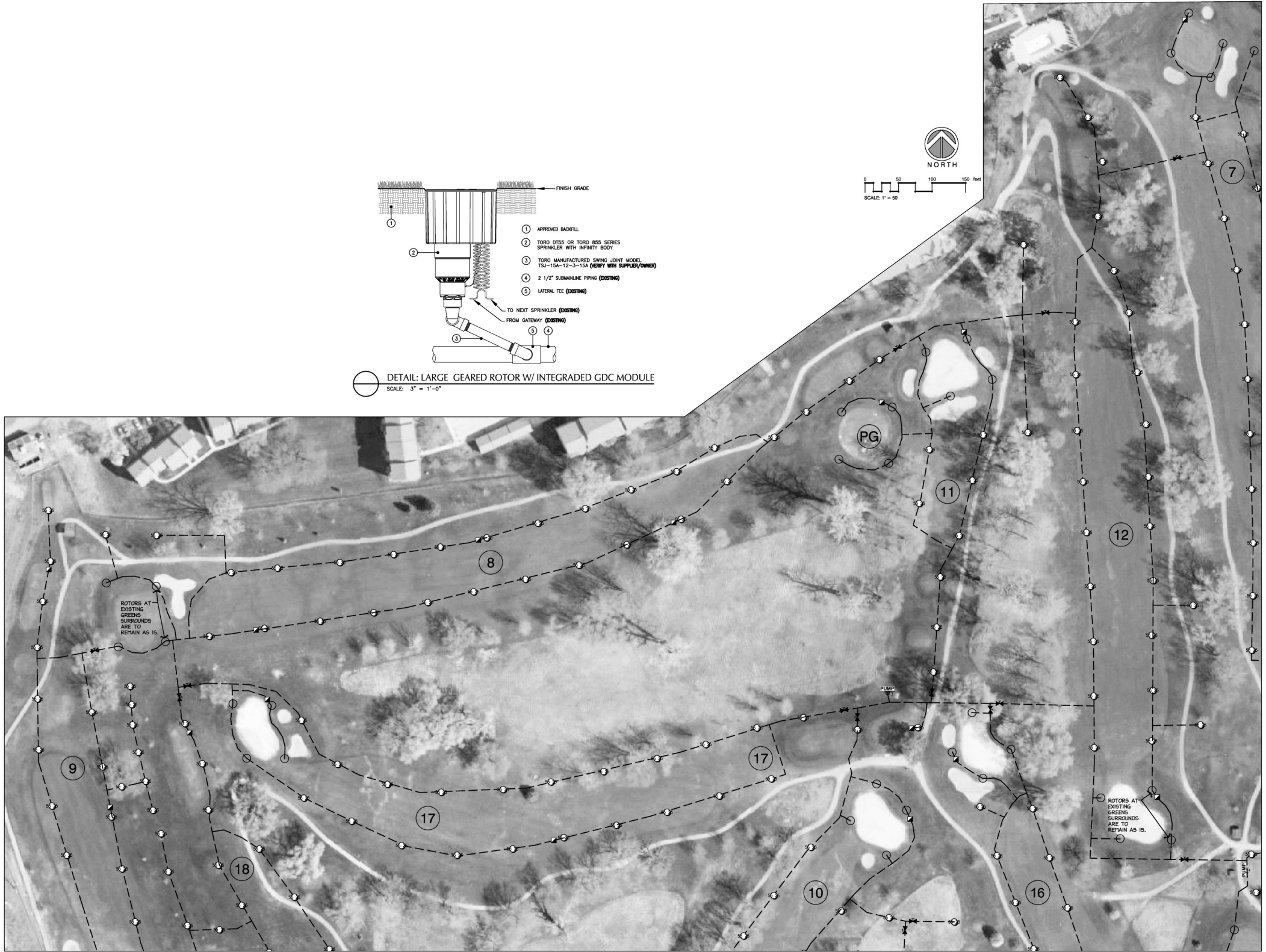
Sheet Title
**Overall Irrigation
Plan**

DESIGNED BY: PHW
DRAWN BY: CMW
APPROVED BY: PHW
PROJECT NO.
DATE: August 24, 2020

NO.	REVISION	DATE

Sub Sheet
IR-1

Sheet
2 OF



Overall Irrigation Plan (Area A) and Rotor Detail

DESIGNED BY: PHW
DRAWN BY: CMW
APPROVED BY: PHW
PROJECT NO.:
DATE: August 24, 2020

NO.	REVISION	DATE

Sub Sheet
IR-2
Sheet 3 OF

Project Name
Dodge Riverside Golf Course Irrigation Improvement Project
Council Bluffs, IA

State of Iowa
PATRICK WYSS
P.E.
8/24/2020

Wyss Associates, Inc.
Golf Course Architecture
Parks & Recreation Design
1225 East 12th Street, Suite 200, Council Bluffs, IA 51501
402.338.2000
www.wyssassociates.com

Consistency of Instruments of Service: All reports, plans, plats, specifications, computer files, field data, notes and instruments prepared by the design professional as instruments of service shall remain the property of the design professional. All common law, statutory and other reserved rights including the copyright therein.



Wyss Associates, Inc.
 Golf Course Architecture
 Parks & Recreation Design
 222 East Street, Suite 200, Iowa City, IA 52242
 319.334.2000
 www.wyssassociates.com

**Dodge Riverside Golf Course
 Irrigation Improvement
 Project**
 Council Bluffs, IA

**Overall Irrigation
 Plan (Area B)**

DESIGNED BY:		PH
DRAWN BY:		CM
APPROVED BY:		PH
PROJECT NO.		
DATE: August 24, 20		
NO.	REVISION	DATE
Sub Sheet		
IR-3		
Sheet		
4	OF	

Ownership of Instruments of Service: All reports, plans, specifications, computer files, field data, notes and instruments prepared by the design professional as instruments of service shall remain the property of the design professional. All common law, statutory and other reserved rights including the copyright therein.





Wyss Associates, Inc.
Golf Course Architecture
Park & Recreation Design
122 South Street, Suite 200, New Britain, CT 06053
Tel: 860.344.2000
Fax: 860.344.2001
www.wyssassociates.com



Overall Irrigation
Plan (Area D)

Sub Sheet
IR-5
Sheet
6 OF

DESIGNED BY: PHW
DRAWN BY: CMW
APPROVED BY: PHW
PROJECT NO.:
DATE: August 24, 2020

NO.	REVISION	DATE

Dodge Riverside Golf Course
Irrigation Improvement
Project
Council Bluffs, IA

Project Name

Ownership of Instruments of Service: All reports, plans, plats, specifications, computer files, field data, notes and instruments prepared by the design professional as instruments of service shall remain the property of the design professional. All common law, statutory and other reserved rights including the copyright therein.