



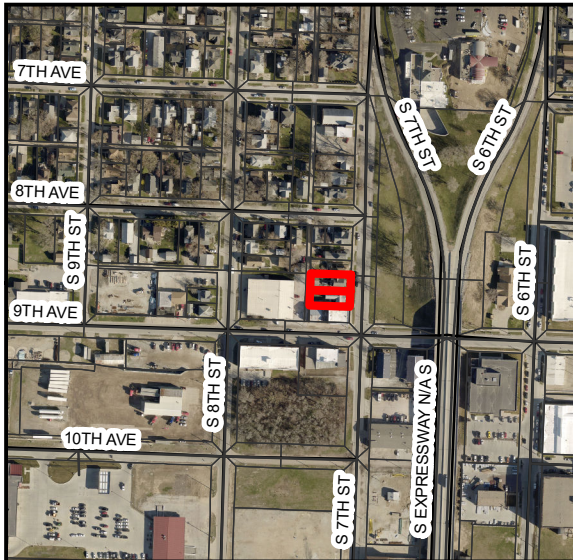
# CITY OF COUNCIL BLUFFS - CITY PLANNING COMMISSION

## CASE #ZC-19-004 LOCATION/ZONING MAP

### Map Legend

-  Properties proposed to be rezoned from I-1 to R-3.
-  Parcels

0 30 60  
1 Inch = 60 Feet



Last Amended: 11/14/19

Council Bluffs Community  
Development Department  
209 Pearl Street  
Council Bluffs, IA 51503  
Telephone: (712) 328.4629

### DISCLAIMER

This map is prepared and compiled from City documents, plans and other public records data. Users of this map are hereby notified that the City expressly denies any and all responsibilities for errors, if any, in the information contained on this map of the same by the user or anyone else. The user should verify the accuracy of information/data contained on this map before using it. The City assumes no legal responsibility for the information contained on this map.

