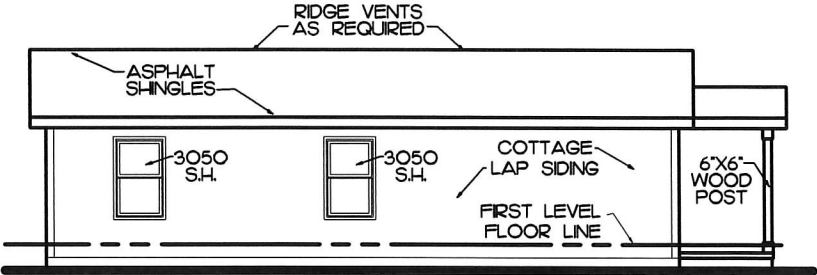
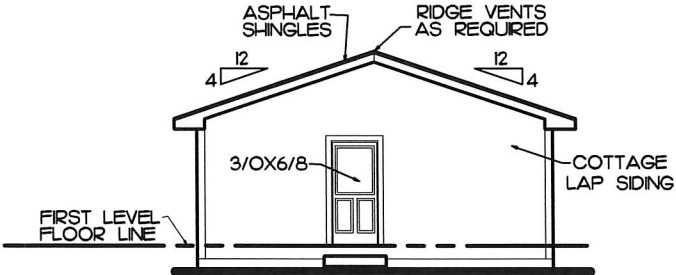


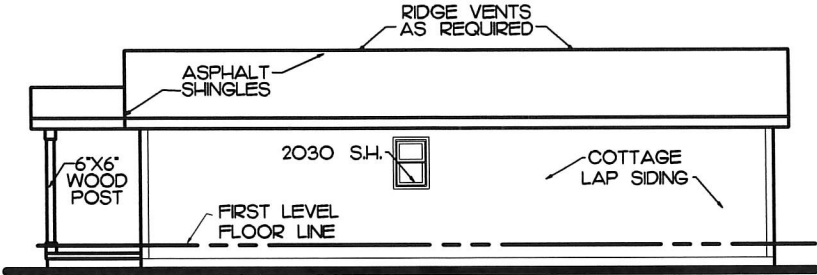
ATTACHMENT C



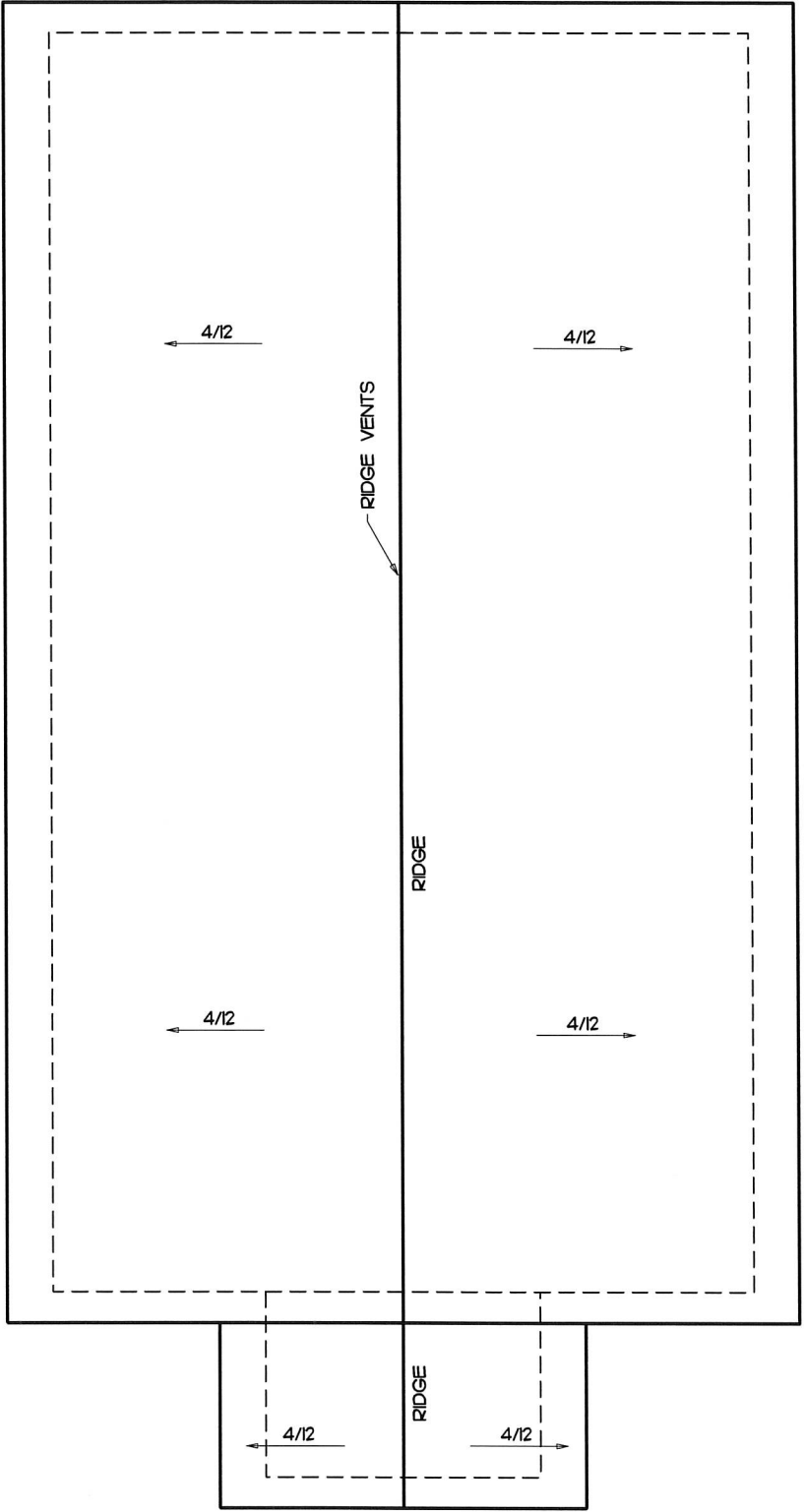
LEFT SIDE ELEVATION
SCALE: 1/8" = 1'-0"



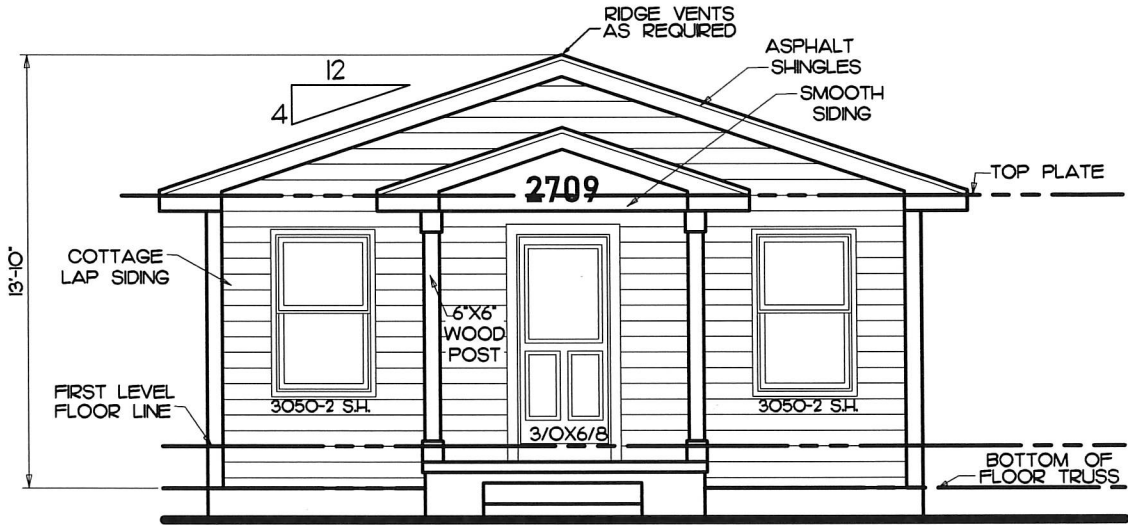
REAR ELEVATION
SCALE: 1/8" = 1'-0"



RIGHT SIDE ELEVATION
SCALE: 1/8" = 1'-0"



ROOF PLAN



FRONT ELEVATION
SCALE: 1/4" = 1'-0"

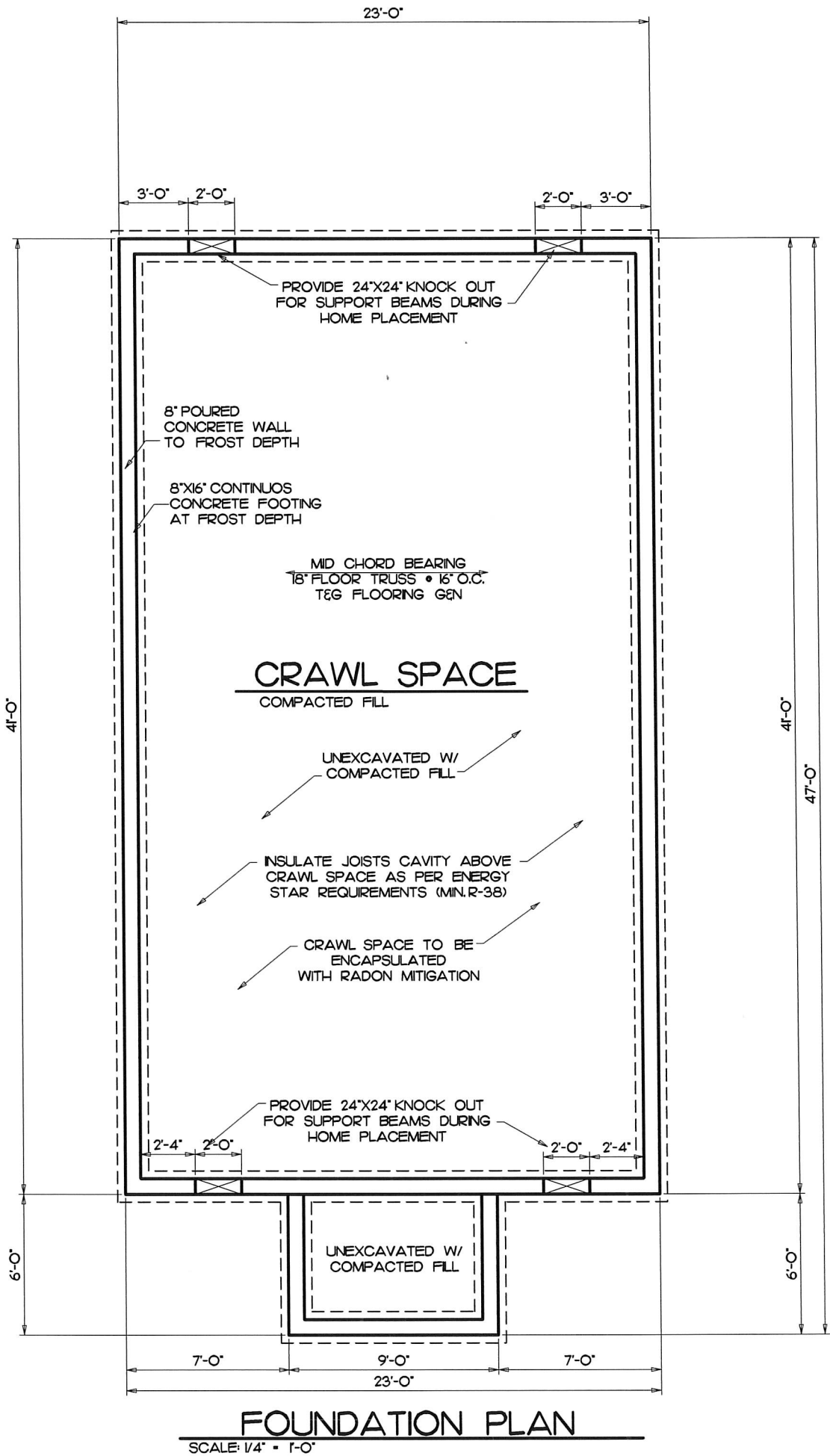
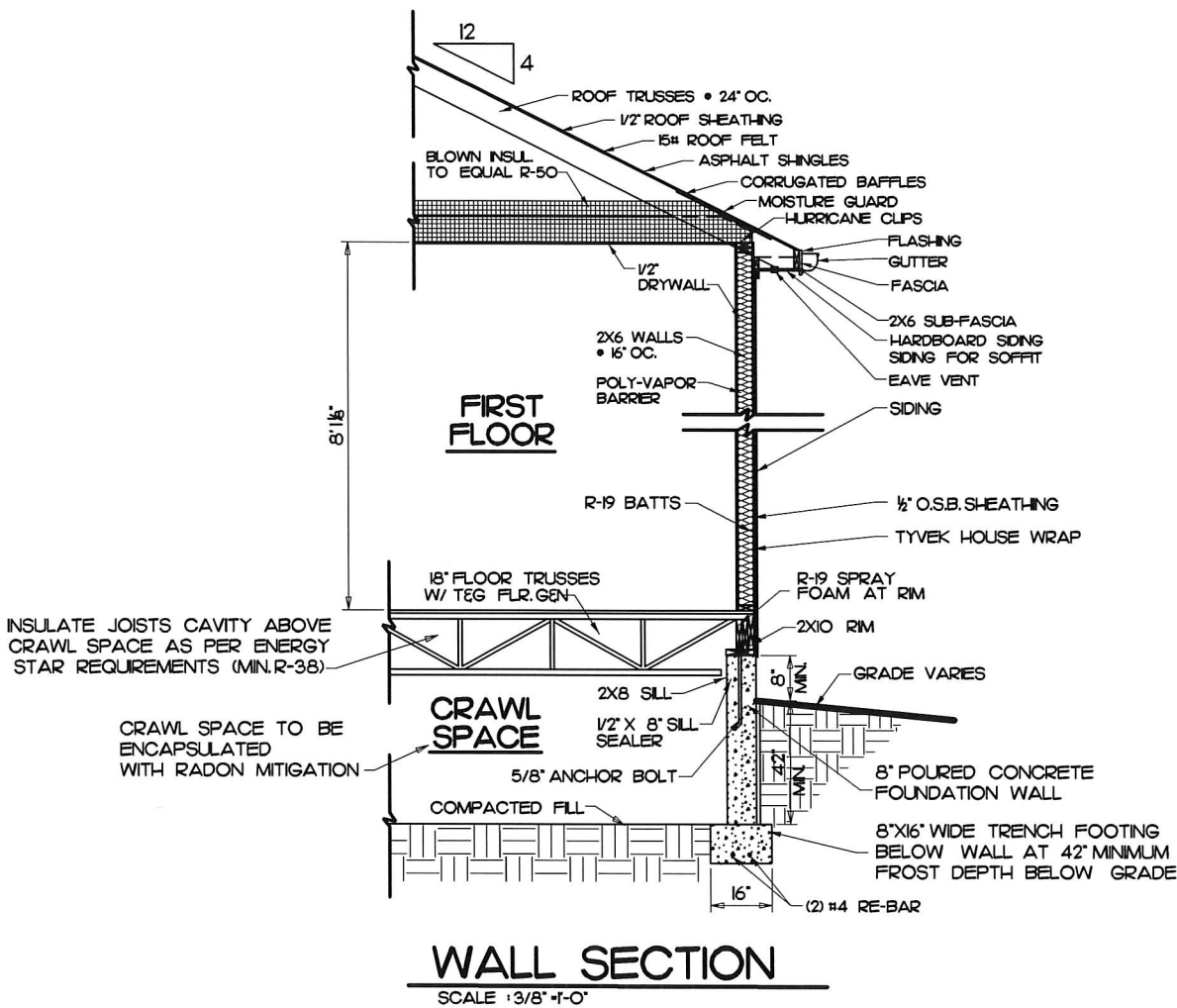
DESIGNER IS NOT AN ARCHITECT OR ENGINEER.
SITE CONDITIONS MAY VARY. DESIGNER CANNOT
WARRANT THE SUITABILITY OF THESE PLANS FOR
YOUR SPECIFIC SITE. CONSULT YOUR CONSTRUCTION
PROFESSIONAL TO DETERMINE THE SUITABILITY OF
THESE PLANS FOR YOUR SPECIFIC SITE.

Habitat for Humanity of Council Bluffs
2709 2nd Ave

TRK
Residential Design Services
Associates
402-592-6968

NOTE: SIZE, SPACING, SPECIES & LOCATION
OF ALL STRUCTURAL MEMBERS IS TO BE
VERIFIED BY CONTRACTOR.

NOTE AIR CONDITIONER LOCATION
DETERMINED ON JOBSITE W/
HVAC CONTRACTOR


















DESIGNER IS NOT AN ARCHITECT OR ENGINEER.
SITE CONDITIONS MAY VARY. DESIGNER CANNOT
WARRANT THE SUITABILITY OF THESE PLANS FOR
YOUR SPECIFIC SITE. CONSULT YOUR CONSTRUCTION
PROFESSIONAL TO DETERMINE THE SUITABILITY OF
THESE PLANS FOR YOUR SPECIFIC SITE.

Habitat for Humanity of Council Bluffs
2709 2nd Ave

Residential Design Services
402-592-6968

TRK
& Associates

NOTE: PLACEMENT OF ALL ELECTRICAL OUTLETS, SWITCHES AND FIXTURES ARE APPROXIMATE. VERIFY LOCATIONS ON WALK THROUGH WITH ELECTRICIAN. ELECTRICAL CODE REQUIREMENTS TAKE PRECEDENCE.

ELECTRICAL LEGEND	
OUTLETS	SWITCHES
 10 VOLT	 TWO-WAY
 220 VOLT	 THREE-WAY
 SWITCHED 10	 FOUR-WAY
 GROUND FAULT	MISC. FIXTURES
 GROUND FAULT WEATHER-PROOF	
 FLOOR OUTLET	
LIGHTING	
 WALL MOUNT	 CLS.FAN/LIGHT COMBINATION
 SURFACE MOUNT	
 RECESSED CAN	
 PULL-CORD SURFACE	
 LED DISC LIGHT	

NOTE: ALL INTERIOR WALLS ARE 3/4" UNLESS NOTED.

NOTE: ALL EXTERIOR WALLS ARE 6" 5/8" STUD W/ 1/2" O.S.B. SHEATHING

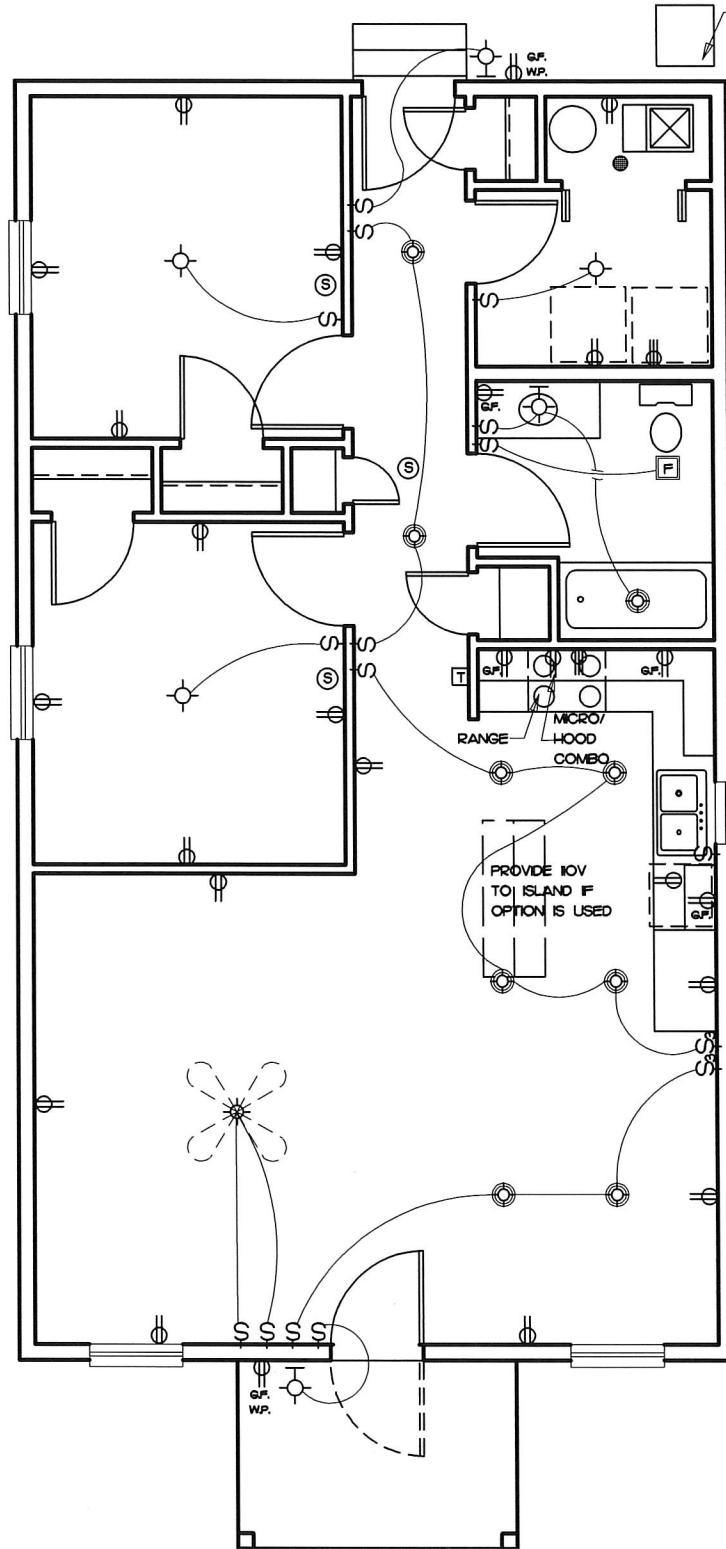
NOTE: ALL DOORS AND OPENINGS ARE 6'-8" TALL

NOTE: ALL EXTERIOR WALLS ARE CONTINUOUSLY SHEATHED WITH O.S.B. SHEETING. BRACED WALL PANELS AS PER 2018 IRC R601.2 AND TABLE R602.10.5

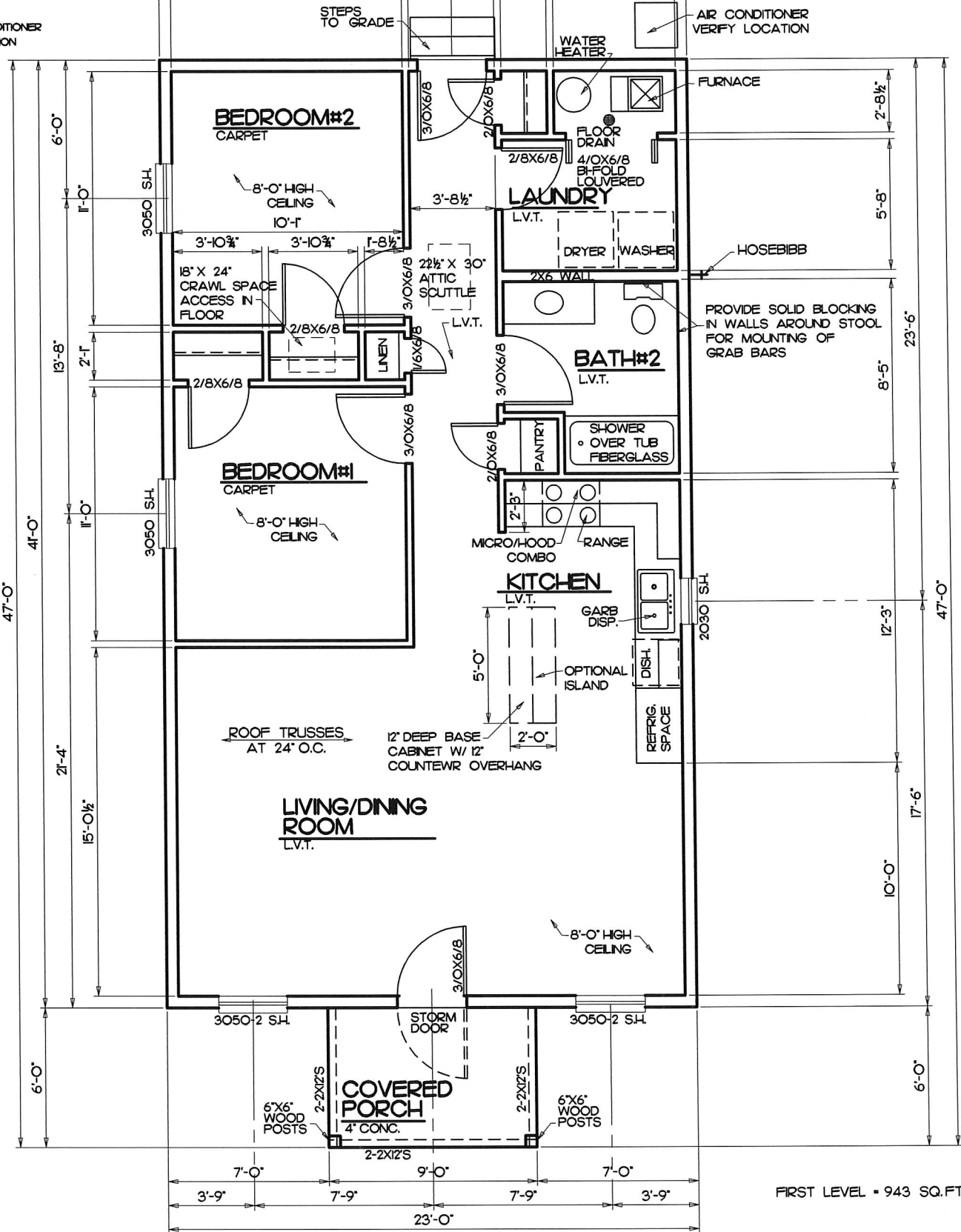
NOTE: ALL MAIN LEVEL WALLS ARE 8'-1 1/2" UNLESS NOTED.

NOTE: WINDOW DESIGNATIONS ARE FOR ANDERSEN SILVER LINE WINDOWS. VERIFY SIZES W/ SUPPLIER.

NOTE: SIZE, SPACING, SPECIES & LOCATION OF ALL STRUCTURAL MEMBERS IS TO BE VERIFIED BY CONTRACTOR.



ELECTRICAL PLAN
SCALE: 1/4" = 1'-0"



FIRST FLOOR PLAN

FIRST LEVEL = 943 SQ. FT.

DESIGNER IS NOT AN ARCHITECT OR ENGINEER. SITE CONDITIONS MAY VARY. DESIGNER CANNOT WARRANT THE SUITABILITY OF THESE PLANS FOR YOUR SPECIFIC SITE. CONSULT YOUR PROFESSIONAL TO DETERMINE THE SUITABILITY OF THESE PLANS FOR YOUR SPECIFIC SITE.

Habitat for Humanity of Council Bluffs
2709 2nd Ave

Residential Design Services
402-592-6968

TRK & Associates